

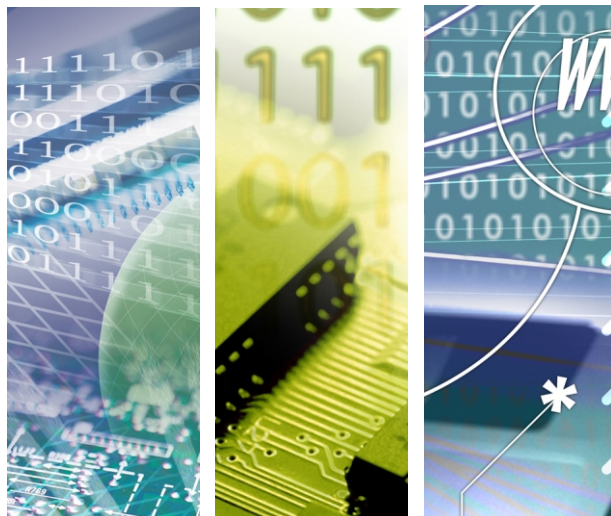


CUB806K

IEEE 802.11b/g/n Wifi-USB module



Ultra 2.4GHz bgn module



CUB806K

Introduction of Products

Bointec CUB806K is a WLAN module supporting IEEE 802.11b/g/n standards with 7-pin or 4-pin connector supporting USB2.0 interface. This is a small form factor and low cost compact WLAN module designed for the wireless connectivity. This module operates in 2.4GHz ISM frequency band; it applies a highly integrated MAC/BBP and RF/PA/LNA single chip RT5372 with 300Mbps PHY rate supporting. It fully complies with IEEE802.11n and IEEE802.11b/g standards.

Product Highlight

- 2T2R Mode, 20MHz/40MHz bandwidth.
- 802.11b: 1, 2, 5.5, 11Mbps;
- 802.11g: 6, 9, 12, 24, 36, 48, 54Mbps ;
- 802.11n: Support PHY rate up to 300Mbps.
- Support Soft-AP; QoS-WMM, WMM-PS; WiFi Direct
- Support WPS/WPS 2.0: Pin, PBC
- Support Wi-Fi Direct native hardware layer
- Worldwide regulatory compliance-RoHS compliant

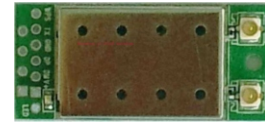


Specification

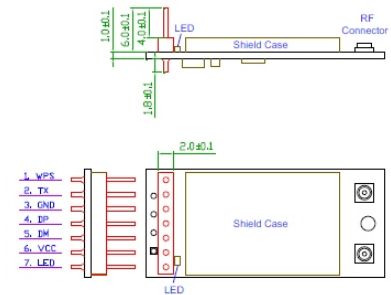
Specification	
Main Chipset	Ralink RT5372L
Operation Frequency	ISM band, 2412~2483.5MHz(Depends on country region)
Protocols	802.11:CCK,QPSK,BPSK,802.11g/n:OFDM
Antennas	Two outputs to external antennas, 50 ohm impedance.
Security	WEP 64/128, WPS; WPA/WPA2(TKIP, AES);WAPI
Typical Transmit Power (Antenna feed point)	802.11b(CCK) 11Mbps:18+/-1dBm
	802.11g(OFDM)54Mbps:15+/-dBm
	802.11n(HT20@MCS7), 14+/-dBm;(HT40@MCS15), 14+/-dBm
Receive Sensitivity (Antenna feed point)	802.11b:-88+/-dBm;802.11g:-73+/-dBm
	802.11n(HT20),-71+/-dBm;802.11n(HT40),-68+/-dBm
Operating Voltage	5.0VDC+-5%;<300mA@802.11g;or 3.3VDC+-5%
Bus Interface	USB2.0
Interface	7-pin or 4-pin, 2.0mm, or 4-pin 2.54 mm pitch pin header
Physical Specification	
Dimensions	33*15x4.2mm(without pin header)
Weight	2.5g(without pin header)

Software and System driver supported		
Operation System	CPU Supplier	Driver
Linux 2.4/2.6	ARM, MIPSII	Available
Windows XP/Vista/7	X86 Platform	Available
Windows CE5.0/6.0	ARM, MIPSII	Available
Mac OS X 10.4~10.7	N/A	Available

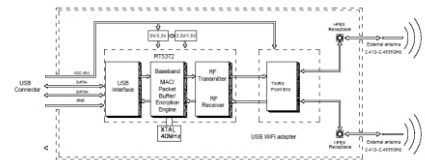
Product quick glance



ME Drawing/placement



Block diagram



TAIJET BOINTEC CO LTD
4F, #114, ZHOULI ST., NEIHU-TAIPEI 11493, TAIWAN
TEL: +886-2-2759-0081 EMAIL: contact@bointec.com
WWW.BOINTEC.COM

Bointec Authorized Distributer

We are Your Partner more than Business

(C)BOINTEC. All rights reserved. Bointec & the Bointec logo are the trademarks of Taijet Bointec, which may be registered in some jurisdictions. All other brands and product names are registered trademarks of their respective holders. Information supplied by Bointec is believed to be accurate and reliable. Bointec assumes no responsibility for any errors in this brochure. Bointec reserves the right, without notice, to make changed in product design or specifications.