



TWRN-91x3204-xx1

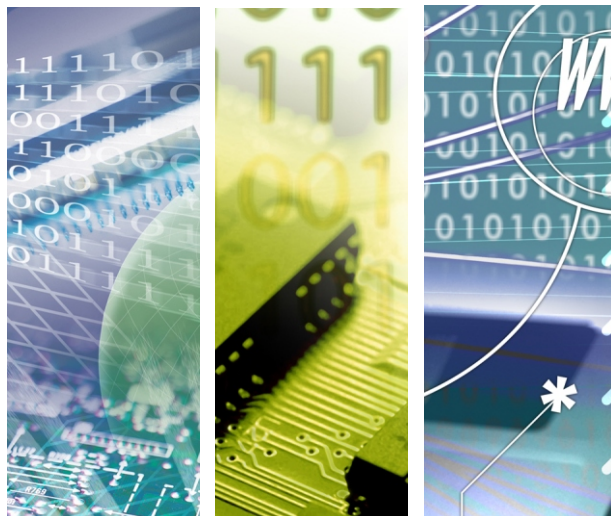
WiFi Dual Band PCB Substrate Antenna



MHF4 (Plug)



IPEX (Plug)



TWRN-91x3204-xx1

WiFi Dual Band antenna

Introduction of Product

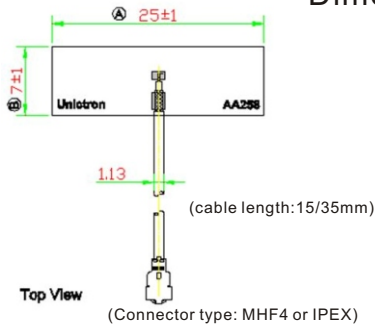
Bointec TWRN-91x3204-xx1* PCB antenna with cable series are specially designed for IEEE802.11(a/b/g/n) applications. Based on professional proprietary design and processes, this antenna has excellent stability and sensitivity to consistently provide high signal reception efficiency.

(*check Ordering information for connectors)

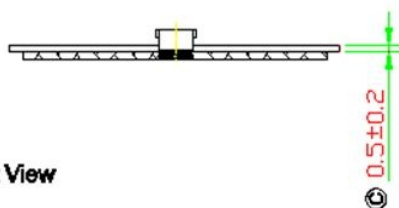
Product Highlight

- WiFi Dual Band antenna
- Dimensions: 25.0 x 7.0 x 0.5(mm)
- Material: GF
- Working Frequencies: 2400~2500 & 4900~5900 MHz
IEEE802.11(a/b/g/n/ac) or Bluetooth
- Gain :
2400~2500 : 0.9dBi
4900~5900 Mhz : 3.8dBi
- Stable and reliable in performances
- Compact size
- RoHS compliance
- Both IPEX and MHF4 connector available

Dimensions of PCB antenna with cable (unit: mm)



Front View



Side View

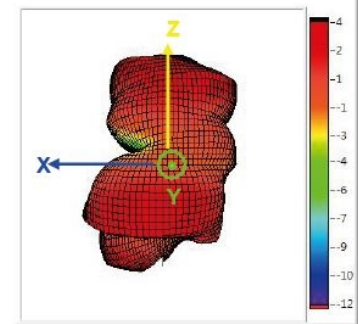
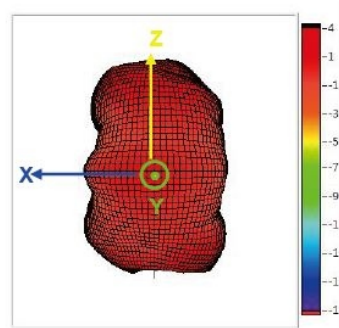
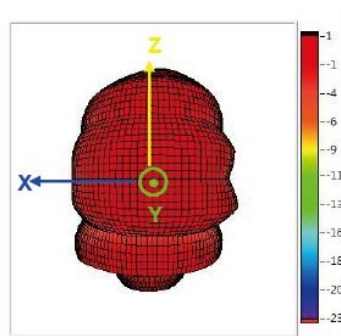
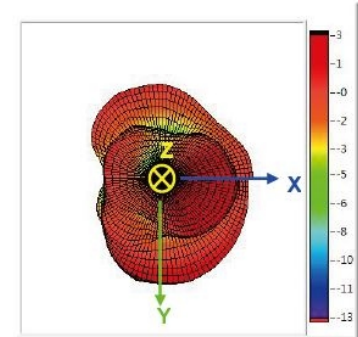
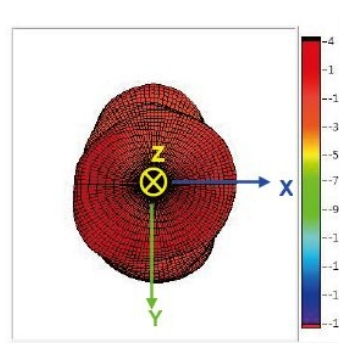
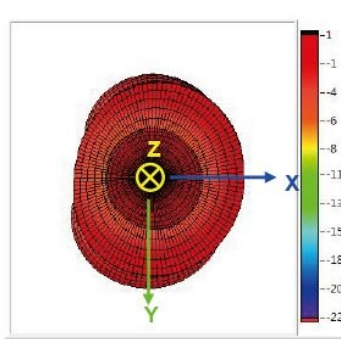
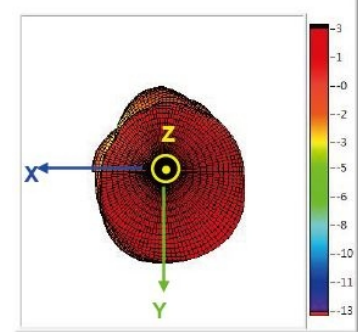
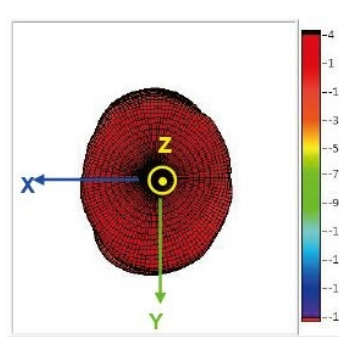
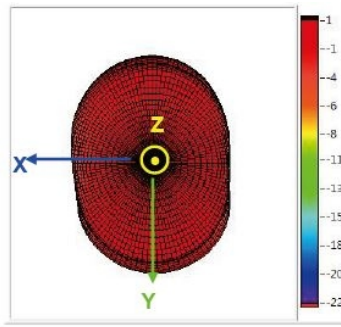


3D Gain Pattern

@ 2442 MHz(unit: dBi)

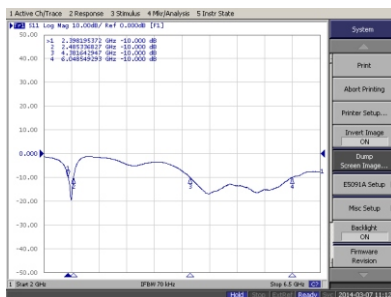
@ 5150 MHz(unit: dBi)

@ 5850 MHz(unit: dBi)

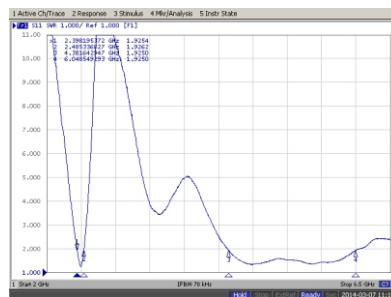


Return Loss & VSWR

Return Loss (S11)



VSWR (S11)



Ordering Information

PART NUMBER	DESCRIPTION
TWRN-9113204-151	2.4GHz+5.8GHz antenna embedded(IPEX connector, 15mm)
TWRN-91G3204-151	2.4GHz+5.8GHz antenna embedded(MHF4 connector, 15mm)
TWRN-91G3204-351	2.4GHz+5.8GHz antenna embedded(MHF4 connector, 35mm)



TAIJET BOINTEC CO LTD
 3F,196-7,SEC3 DATONG RD., XIZHI, TAIPEI 22103, TAIWAN
 TEL: +886-2-2759-0081 EMAIL:contact@bointec.com
 WWW.BOINTEC.COM

Bointec Authorized Distributer